

# AIRBORNE MAGNETICS INTERPRETATION INITIATIVE

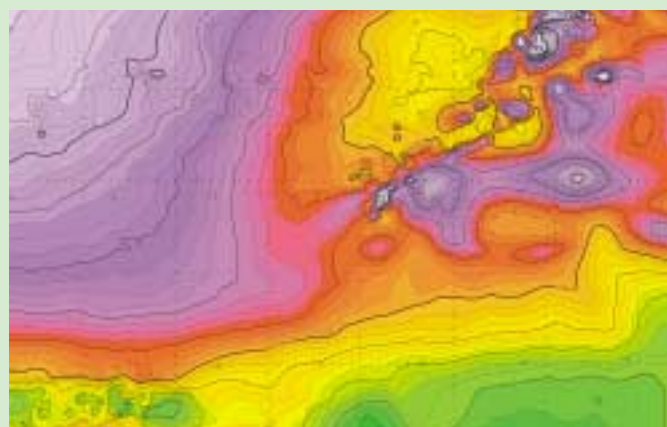
**EXPLORATION  
AND MINING  
DIVISION  
IRELAND**

## Free Geophysical Interpretation Central Basin Zinc Province

This initiative is a joint collaboration between the Exploration and Mining Division and PGW Europe Ltd. to reprocess and interpret newly released high resolution airborne magnetic datasets over the highly prospective Central Ireland Basin zinc province. The aim is to stimulate the identification of new exploration targets over an area of some 15,000 sq. km.

### What is provided free

- A suite of 1:100,000 scale maps and reports in digital format for each of three adjoining blocks, consisting of:
  - Pole reduced total field magnetics
  - Geophysical interpretation – structure and lithology
  - Geophysical interpretation – regional basement terranes



- Mineral deposit map with exploration permit areas
- Report covering datasets, processing techniques, basement terranes, mineral deposits, structural controls of mineralisation

### Available from PGW

- Original processed products
- Linked / leveled total magnetic field
- Individual and composite grids.
- Enhanced images for interpretation (1VD, RTP, AS, Euler)

**First block release in  
April 2003**

Watch  
[www.emd.ie](http://www.emd.ie)

